

INTERNATIONAL MARKET PLACE



2330 KALAKAUA AVENUE HONOLULU, HI 96815

Located in the heart of Waikīkī, International Market Place is a world-class shopping, dining and entertainment destination featuring a curated mix of upscale and lifestyle brands, and Target coming 2024.

The open-air center greets visitors with an iconic century-old banyan tree and offers a third-level Grand Lanai for dining under the sun and stars. The center is easily accessible from Kalākaua Avenue and Kūhiō Avenue.

225,000 SF*
90+ STORES
15 FOOD OPTIONS

[Center Website \(https://shopinternationalmarketplace.com/\)](https://shopinternationalmarketplace.com/)

KEY BRANDS

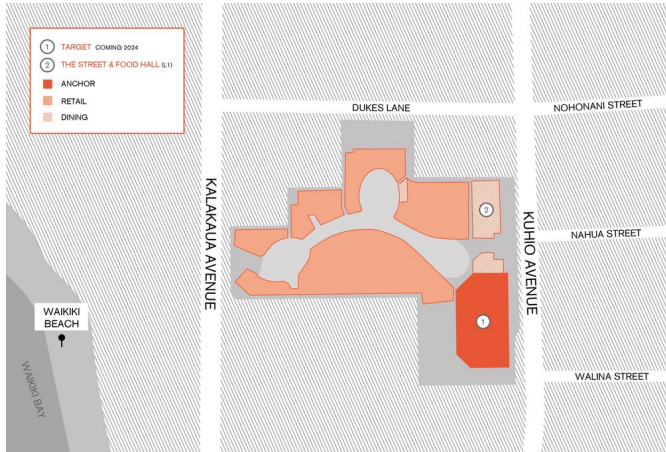


KEY RESTAURANTS



LOCATION

SITE PLAN MAP

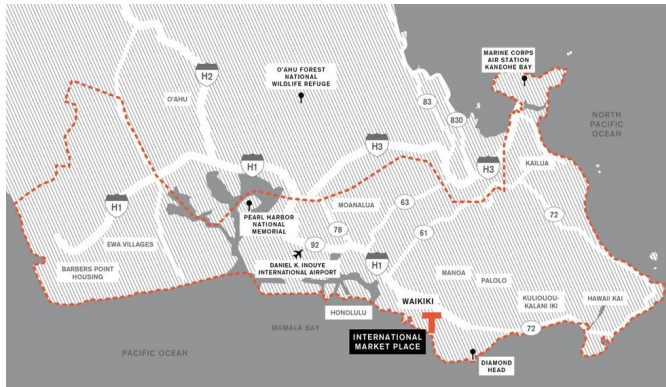


TRAFFIC MAP

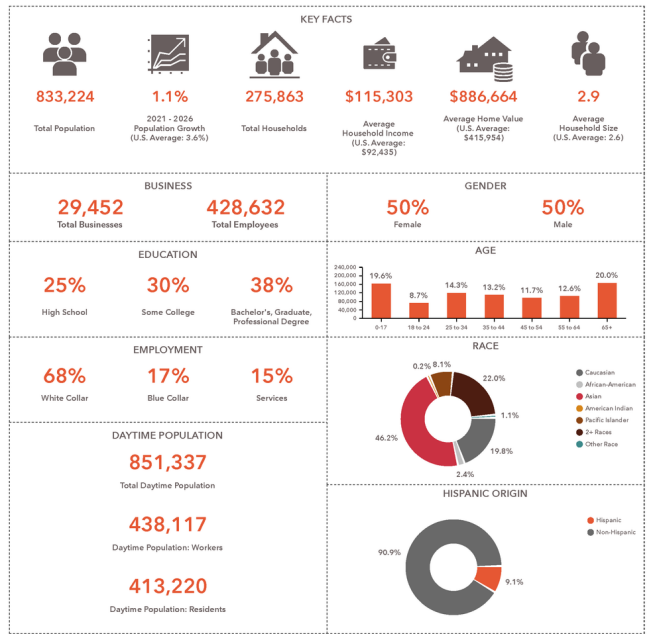


MARKET INSIGHTS

TRADE AREA MAP



TRADE AREA DEMOGRAPHICS



*Square footages are approximate and include in-line tenants, common area and anchors.