

WESTFARMS



1500 NEW BRITAIN AVENUE, WEST HARTFORD, CONNECTICUT 06110

Westfarms is the dominant upscale shopping destination between the New York metropolitan area and Boston. Located in central Connecticut at the intersection of I-84 and Route 9, the center is home to anchors Nordstrom, Macy's and JCPenney. In addition, the center offers a strong mix of stores and restaurants, many unique to the trade area.

1.4 MILLION SF*
150+ STORES
15+ FOOD OPTIONS

Anchors: Macy's (208,790 SF), Macy's Men's & Furniture Gallery (79,992 SF), Nordstrom (175,415 SF) & JCPenney (190,713 SF)

[Center Website \(https://shopwestfarms.com/\)](https://shopwestfarms.com/)

KEY BRANDS

Abercrombie
& Fitch

alo

ANTHROPOLOGIE



ARHAUS

ATHLETA

COACH
NEW YORK

FABLETICS

H&M

J.CREW



LOUIS VUITTON

★macy's

Madewell

NORDSTROM

THE
NORTH
FACE

POTTERY BARN

SEPHORA



TIFFANY & Co.

TUMI

UNTUCKit

URBAN OUTFITTERS

VICTORIA'S
SECRET

KEY RESTAURANTS



P.F. CHANG'S
CHINA BISTRO

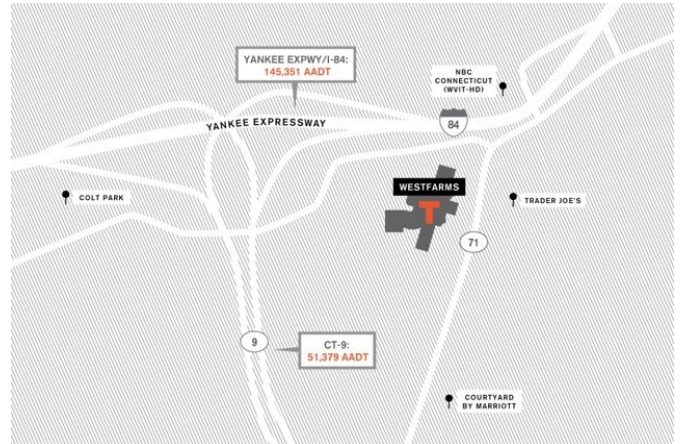
TEXAS de BRAZIL

LOCATION

SITE PLAN MAP

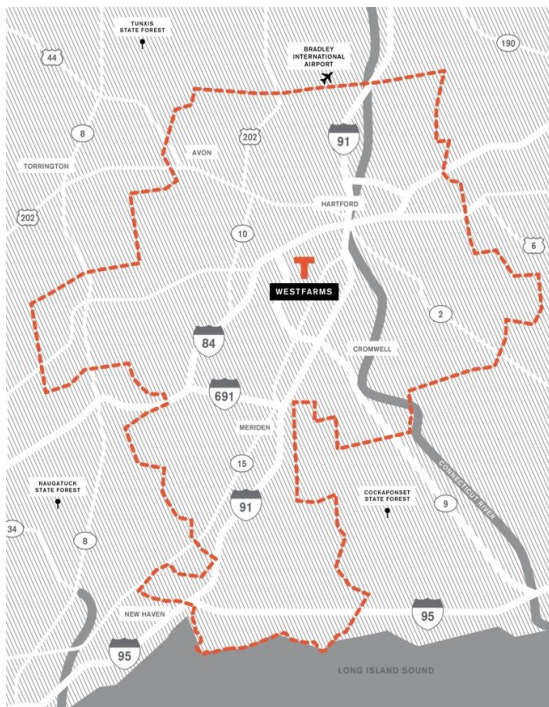


TRAFFIC MAP

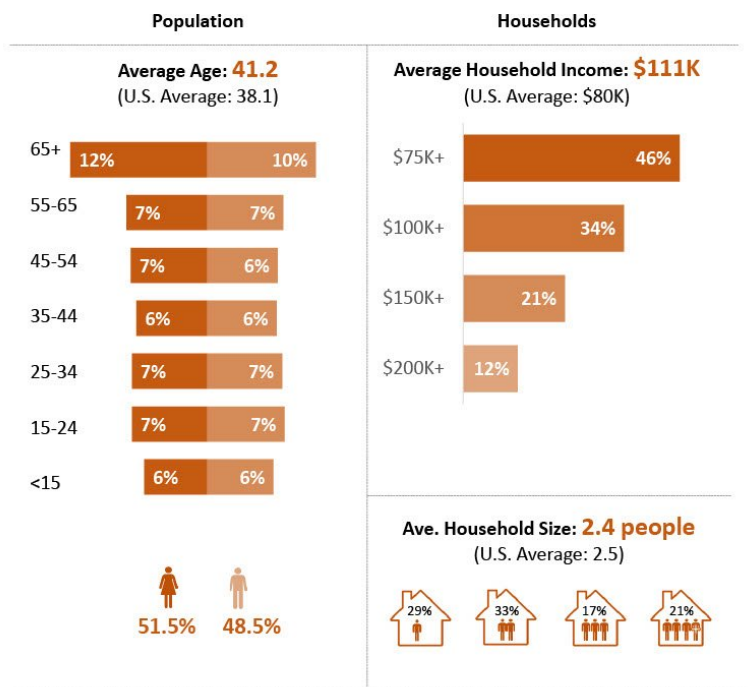


MARKET INSIGHTS

TRADE AREA MAP



TRADE AREA DEMOGRAPHICS



ECONOMY
Hartford is nicknamed "The Insurance Capital Of The World"
Travelers Companies

*Square footages are approximate and include in-line tenants, common area and anchors.